

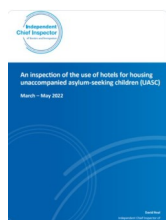
A weekly round up of local government news in the East Midlands brought to you by East Midlands Councils

Top items this week

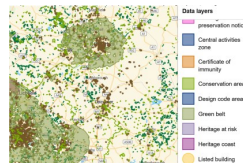
21 OCTOBER 2022



Levelling Up and
Regeneration Bill Event



Borders and Immigration
Report



National map of planning
data



Tender for TESOL

What's LURB got to do with it?

A symposium on the Levelling Up and Regeneration Bill in relation to planning

Councillors, Join EMC for a symposium to explore the LURB in relation to planning, its journey so far, and how it will impact the devolution and the Levelling Up agenda. The event will be chaired by Cllr Roger Blaney from Newark and Sherwood District Council and will have key speakers including:

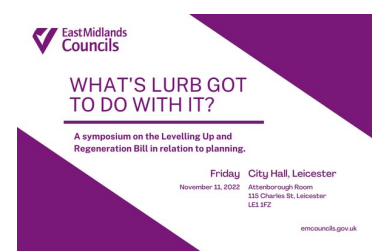
- Professor Tony Crook, CBE FAcSS FRTPI, Emeritus Professor of Town & Regional Planning & Public Orator, The University of Sheffield
- Professor Janice Morphet, UCL Bartlett School of Planning
- Hugh Richards, Landmark Chambers
- Andrew Pritchard, Director of Policy & Infrastructure, East Midlands Councils

For more information and to book a place, please visit [here](#) . A copy of the programme can be found [here](#).

Date and time - 11 November 2022, 10:00—13:00 (with coffee available from 9:30 and lunch served at the event close)

Venue - City Hall, Leicester – Attenborough Room

Cost - The event is fully subsidised by EMC and free to attend.



EMC News

Tender Package for Tuition of ESOL

East Midlands Strategic Migration Partnership seeks a partner to provide access to Teaching English to Speakers of Other Languages (TESOL) training for former asylum seekers and migrants arriving under resettlement and visa programmes, such as Hong Kong BN(O), United Kingdom Resettlement Scheme, Afghan Citizens Resettlement Scheme, etc. The service will include subsidised course fees, end-to-end pastoral support, and onward signposting to informal or formal ESOL provision for employment, work experience, voluntary activity, etc.

Bids should be submitted to SMP@emcouncils.gov.uk by 12 noon on Monday 14th November 2022.

More information on how to apply can be found [here](#).

An inspection of the use of hotels for housing unaccompanied asylum-seeking children (UASC)

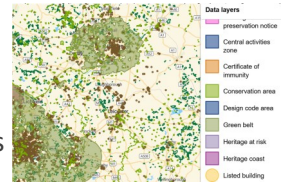
On Thursday, the Independent Chief Inspector of Borders and Immigration (ICIBI) published his report into the inspection of the use of hotels for housing unaccompanied asylum-seeking children. Full details and recommendations from the report can be found [here](#).

For further information relating to UASC, please contact Matthew Clarke, Senior UASC Policy Officer at matthew.clarke@emcouncils.gov.uk

Infrastructure, Planning & Housing

Government launches new 'national map of planning data'

The Department for Levelling Up, Housing and Communities (DLUHC) has launched a new online planning data platform, including a new "national map of planning data", as part of its efforts to standardise and simplify the collection and presentation of planning information.



In her latest [planning newsletter](#), the chief planner Joanna Averley said that the launch of the new "[planning data platform](#)" and "[national map of planning data](#)" marks "an exciting moment in the digital modernisation of planning".

"The platform collects planning and housing data from national sources and local planning authorities (LPAs) and transforms it into a consistent state across England. Anyone can view, download and analyse the data we hold. All the data is also presented in a single digital map on which you can switch on and off a number of data layers," the chief planner said. Layers on the map include areas of ancient woodland, green belt, sites of special scientific interest, brownfield land, areas with article four directions, and conservation areas.

Averley said that the new platform "will enable more user-friendly services to be created which will support communities and developers to interact with local plans and planning application processes, as well as helping improve ways of working for planning officers. In turn, this should lead to a more streamlined, certain and interactive service that benefits all stakeholders." The platform is still in the development stage and does not yet cover all of England.

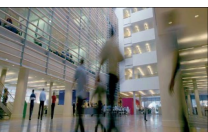
Improving planning performance: criteria for designation - This document sets out the government's criteria for assessing local planning authority performance in determining applications for major and non-major development. The explanatory memorandum explains the changes to the criteria for assessing local planning authority performance [details [here](#)].

In our hands: behaviour change for climate and environmental goals - The Environment and Climate Change Committee's report is now published online [here](#).

Midlands Connect are preparing a business case to reconnect the rail line between Coventry, Leicester and Nottingham and need the support of local businesses. Complete the quick survey and tell Midlands Connect how a faster, more frequent and most importantly, direct, rail service between these cities would impact your business and colleagues [details [here](#)].

Delays for Great British Railway's Delivery—New Transport Secretary Anne-Marie Trevelyan, appearing at the Commons Transport Select Committee on Wednesday morning, has announced that the planned transport bill that would legislate the establishment of Great British Railways (GBR) will not go ahead in this parliamentary session. At the moment it is not clear how this will impact on the competition to host GBRs HQ – which includes an East Midlands bid from Derby. More information can be found [here](#).

Local Government News



Handling online abuse and intimidation (LGA virtual webinar) Thursday 27 October 2022, 10.30am - 12.00pm - many councillors say that they are reporting unprecedented levels of abuse and threats on social media. This practical programme will provide attendees with an awareness of the steps that can be taken to manage trolls and cyber-bullies, including a gentle introduction to the legal framework around social media posts.

EMC Leadership

Chair: Cllr Martin Hill OBE
Vice Chair: Cllr Sarah Russell
Vice Chair: Cllr Jonathan Morgan
Conservative Group: Cllr Roger Blaney
Labour Group: Cllr Rob Parker
Lib Dem Group: Cllr David Bill MBE
Independent Group: Cllr Jason Zadrozny
Executive Director: Stuart Young

East Midlands Councils

First Floor Offices, South Annexe
Pera Business Park
Nottingham Road
Melton Mowbray
Leicestershire
LE13 0PB

For more information visit our [Twitter](#), [LinkedIn](#), or [YouTube](#). We can also be found at emcouncils.gov.uk.

